

SUMMER POINTE VILLAGE

⌘ A STARK LIVING – GAEKWAD COMMUNITY

16152 SE 77TH Court Rd
Summerfield, FL 34491

SummerPointeVillage.com

352.658.0903

SummerPointeVillage@StarkLiving.com

The Place
To Call Home



CHECK OUT MORE
ABOUT THE PROPERTY!

STARKLIVING
⌘ A STARK ENTERPRISES COMPANY



NEW 1•2•3 BEDROOM RENTAL HOMES

Welcome to Summer Pointe Village

- The Place to Call Home. This premier rental home community in Summerfield, Florida, offers **elegant ranch-style homes** designed to provide the perfect balance of luxury and comfort. With spacious 1, 2, and 3-bedroom floor plans, residents will enjoy modern, single-family-style living with private driveways, attached garages, and resort-style amenities. The

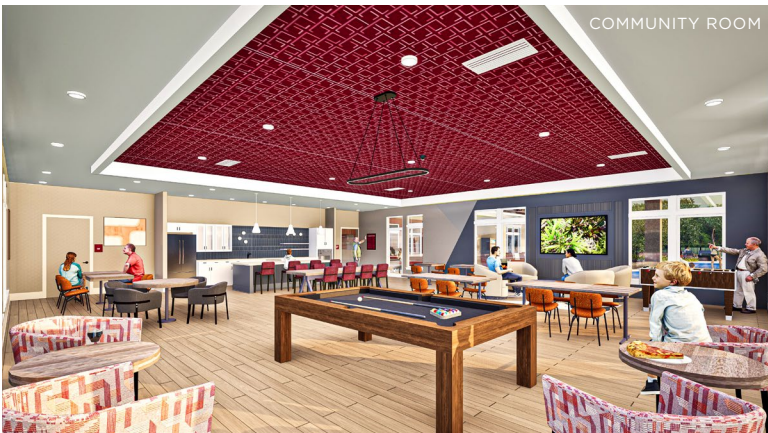
community features a state-of-the-art fitness center, a clubhouse, a multi-sport court, fire pits, a playground, and a pool with grilling and entertaining areas—all fostering connection and relaxation. Discover why Summer Pointe Village is the ultimate destination for anyone seeking a low-maintenance lifestyle in a vibrant, active neighborhood.



POOL DECK



COMMUNITY AMENITIES



COMMUNITY ROOM

COMMUNITY AMENITIES

Clubhouse

- Community Room
- Kitchen and Coffee Bar
- Conference Room
- Bike Racks
- Controlled Access with Private Entry
- Personal Network Connectivity Throughout Community
- Multi-Sport Simulator: Basketball, Cornhole, Football, Golf, Soccer & even Zombie Dodgeball
- Community Events

Dog Park

- Dog Park with Agility Course & Gated Entrance

Fitness Center

- 24/7 Access
- State-Of-The-Art Equipment
- Movement Studio

Playground

- Multiple Slides with Sun Shade

Pool Deck

- Zero-Entry Pool with Lap Lanes & Sundledge
- Poolside Grill, Fire Pits and Entertaining Area

Property Amenities

- Centralized Mail Kiosk
- On-site Management & Maintenance
- Smoke-Free Environment
- Pocket Parks

Sport Court

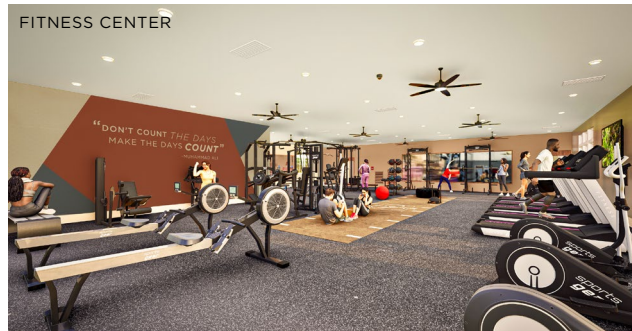
- Multi-Sport Court : Pickleball & Basketball

SUMMER POINTE VILLAGE

A STARK LIVING – GAEKWAD COMMUNITY



INTERIOR CLUBHOUSE



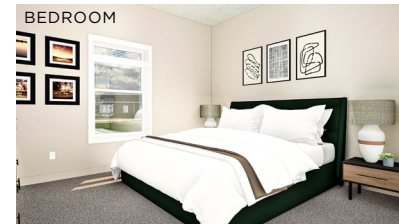
FITNESS CENTER

UNIQUE FEATURES

- 2 Car Attached Garage
- 9ft Ceilings
- Cable & Internet Ready With Private Network
- Contemporary Shaker Style Cabinets
- Covered Private Front Porch
- Dedicated Outdoor Rear Patio
- Designer-Style Color Palette
- Generous Walk-In Closets
- **No Neighbors Above**
- Open Floor Plan
- Oversized Pantries
- **Private Driveway**
- Quartz Countertops
- Single Story Living
- Stainless Steel Kitchen Appliances
- Tub & Walk-In Shower* (Select Units)
- Washer & Dryer In-Home



KITCHEN



BEDROOM

FLOOR PLANS



THE HAVEN
1 BED • 1 BATH
904 SQ FT



THE SOLSTICE
2 BED • 2 BATH
1,175 SQ FT



THE ELITE
3 BED • 2 BATH
1,376 SQ FT